

32. *"The Invincible Era"* Sheffield Hollow Ground is etched on the blade. James Barber ERA Sheffield on the left tang. Some rust on tail. Top & bottom jimbs. Thick composite handles. Like new, Sharp shaver.



33. B. Richardson & Son on left tang. No. 77 South 2 St Phila P on blade rib. Top & bottom jimping. Unusual blade shape. Horn handles, wedge type.



34. Camillus Cutlery Co. U.S.A. on the left, with composite handles. Like new, clean shaver.



35. dubl duck Goldedge & 2 ducks are on the left. Pearlduck dubl duck & 2 ducks Solingen Germany on the right. Pearalized celluloid handles with Goldedge stamped on left handle, bolster is missing. Right handles has brass bolster of 2 ducks. Blade is tarnished but sharp.



36. The Artist, Levering Razor Co. on the left. A ☆ and HAMBURG-GROUND GERMANY on the right. Bottom grooves. Composite handles Box. VG clean shaver.



37. Brosum Regd. Left tang Ground & Made in Germany on right Tang is covered, top/bot jimps HAMBURG KING Brosum on blade Colorful green celluloid handles, 3 pin Brosum Reg inlaid on handle. Very Sharp



38. "+ * Joseph Rogers & Sons CUTLERS TO HER ROYAL MAJESTIES No 6 Norfolk Street Sheffield" on the left tang. This wedge is a Sharp shaver and only minor tarnish for its age. Touch of rust at bottom pin and on tang at pivot pin. Set in composite handles. Box



39. This is a No Name plain razor but has very a Nice Peacock Celluloid handle.



40. Henry Sears & Sons 1865 is on the left and Extra Ground & Mfd in Germany is on the right. There is stamped scrolling both sides of tang, and bottom jimbs. This is a Very Nice Patterned and Fleur design on pumpkin color Celluloid handles. Just a bit of rust on the tail. Very good shaver and as well as a showpiece. Made before 1897.





41. WEDGE is on left tang. Genuine Made with a hand on the right. WEDGE is imprinted on ivory color composite handles. Some tarnish. Made by Kinsfolk Inc., Little valley, NY



42. 35 1/2 A. TOFFOLI is on the left and a maritime design (anchor & flags) is on the right, with bottom jimps. Beautiful, Colorful Celluloid handles with Metal bolsters at both ends and both sides of handles. Touch of rust at pivot pin. Minor tarnish but very sharp and usable. From Padua, Italia.

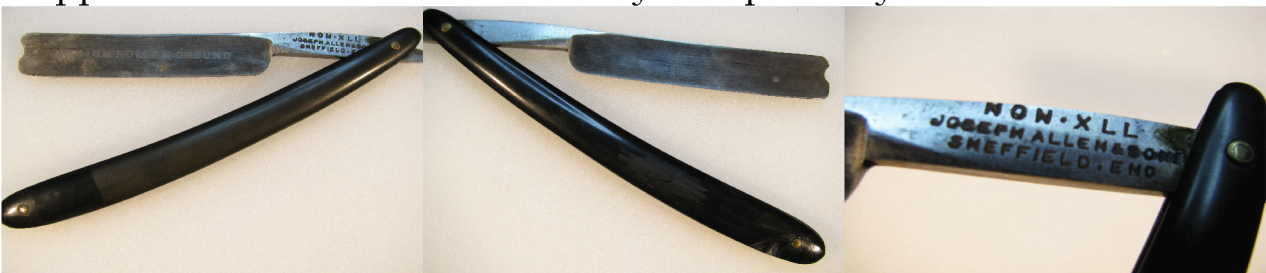


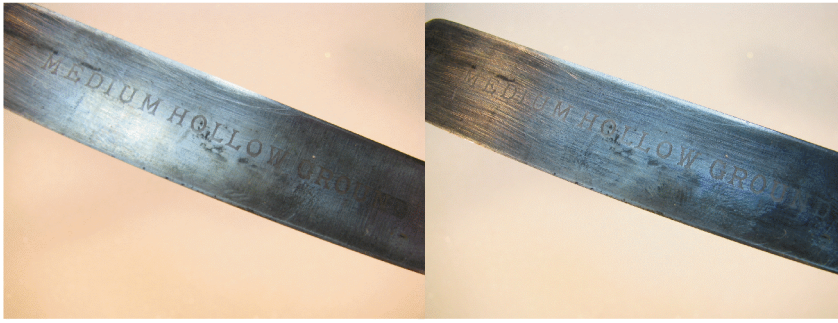


43. "The 1066" TEN SIXTY-SIX, in gold wash on the blade and "The 1066" Full Hollow Ground, on the left tang. Finest Silver Steel Forged and Real Hollow Ground in Germany, on the right tang. Top and bottom jimbs. 3 pin. Heavy composite handles, only a TOR on the tail. Like New.



44. NON-XLL Joseph Allen & Sons Sheffield, Eng., on the left tang. "Medium Hollow Ground" is on the blade. Composite handles one chipped at base. Notched head. Very sharp. Early 1900's.





45. KING'S RAZOR MFG CO, INDIANA. PA. is on left tang. "II" scrolling on left & right. "Kings's GOLD - MAN Razor" on left handle, embossed but worn, but with Very Nice Celluloid Handles. The blade was formerly Gold Washed. Tang has bottom jimbs. A Man named John owned this scratched J.K. on handle ends with his name on right handle near the pivot. This is in really nice condition. This also has a King Razor box and is one of the nicer items I have seen, from a larger collection. Made between 1904 and 1911.



46. 812 FRIEDRT BAURMAN & SOHNE SOLINGEN is on the left tang. There's a Gnome on right side. MY RAZOR is etched on the blade. Very Nice ivory style Celluloid handles. Made between 1900-1914. There is also some rust and the blade has been cleaned before. But My Razor is very, very sharp.



47. THE J.R. TORREY CO ←U-S→ WORCESTER MASS is on the left tang. Nice Ivory type Celluloid Handles. This is post 1930 and Like New. Nothing wrong except a TOR at the pivot.



48. * KA-BAR 44 on left handle. KA-BAR Union Cutlery Co. Olean, N.Y. on right tang, and * KA-BAR 44 is also on the left tang. Wear at handle end. Made from 1923 and this is an early one. Gold washed blade is much worn. Celluloid handles. Blade is very sharp. VG shaver, with box. K-BAR's are much sought after.



49. SPIKE on left and Union Cutlery Co. Olean, N.Y. on right. Nice ivory type Celluloid handles. Handle Embossed with Spike & logo. Made between 1911 & 1919. Clean & sharp. Part of box.

