

133. Clauss Fremont, Ohio on left tang. Old Horn Handles VG. Older blade in VG condition. Nice rust & chip free blade. Shaver.



134. Another Early Clauss, this one longer but not as large, in smaller Bone handles, marked 4101. Bolstered both sides top & bottom, and no rust. Pins and bolsters intact and strong. Sharp Shaver.

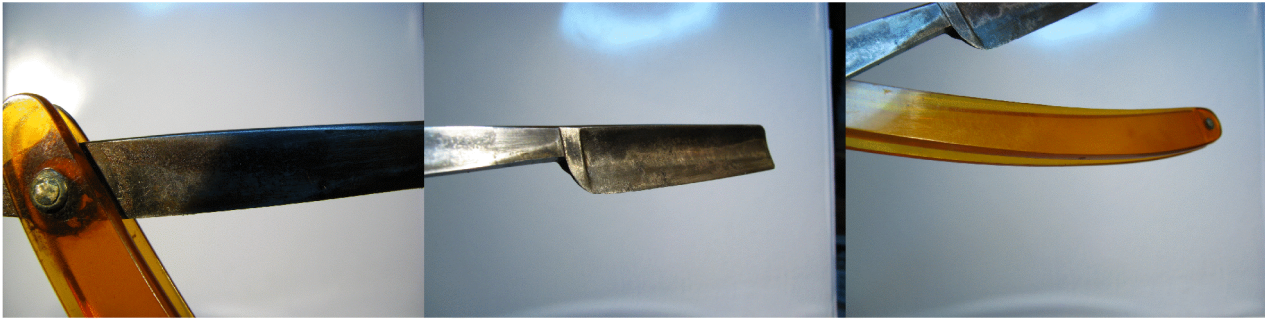


135. Clauss again, with the logo stamp they used later, like 134 above, but on the right tang. EX-USU in an odd font is on the left tang. Bottom Jimping. Bone Handles. No rust. Sharp. Crack in bone at end of handle.



136. G.H. KRAWETZKE, FREMONT, O. on left tang. Very NICE AMBER CELLULOID HANDLES. NO RUST ONLY A SMALL CHIP AT BASE OF BLADE. A BIT TARNISHED BUT SHARP.





137. CROGHAN CUTLY CO FREMONT OH on left. GROOVES ON TANG, SET IN VANILLA IVORY STYLE CELLULOID HANDLES. NO RUST AND BLADE IN VG CONDITION. Shaver.



138. HOLLINGER HAND MADE FREMONT, O. with 1015 on the left tang. MADE BY HOLLINGER SOLIGNEN, GERMANY on right. HOLLINGER HAND MADE FREMONT, O. is also etched inside scrolling on the blade. (J HOLLINGER & BROS FREMONT OH 1905-1958) THIS ONE WITH COVERED TANG, SET IN VERY NICE IVORY CELLULOID HANDLES WITH PINS SECURE. SOME TARNISH. VERY ARTFUL GRINDING ON THE TANG.





139. 20 TEMPERITE on left tang. MADE IN U.S.A. BY CASE on the right. SET IN NICE SOLID CREME CELLULOID HANDLES. MINOR TARNISH BUT SHARP. VERY LITTLE HONING OR WEAR.



140. JACKSON, FREMONT, OHIO. MADE 1893-1904. THIS ONE IS SET IN NICE EMGRAVED CELLULOID HANDLES AND ONLY MINOR CHIPS. NO RUST. SHARP SHAVER.



141. *Antelope* & 32 on the left tang from *Griffon Cutlery Works Germany* on the right. Grooves on the bottom set in Bone handles. Blade is 6.5" long and 5/8th" wide. One of the handles was repaired and the pivot pin reworked and is missing ring washer. Sharp.



142. *CLAUSS (FREM)ONT, O. U.S.A. TO2B* on left tang with bottom grooves and minor tarnish set in Very Nice Clear Aquamarine Celluloid Handles. Pinning is intact and original. Tip of the left handle has been repaired. Shaver.



143. A Very Nice razor from *KLAS TORNBLOM, ESKILSTUNA SWEDEN* that's in pristine shape set in great ivory celluloid bamboo style handles; just a minor scratch near the bottom left handle. The blade is Frameback style and etched with a star inside a big X. Sharp and shaveable. It came in a box from the same place marked *C.V. HELJESTRAND*, which was another Swedish manufacturer.



144. Royal Razor Simmons Hardware on the box with THE CELEBRATED ROYAL KEEN CUTTER RAZOR on the clean blade, ROYAL embossed in thick bakelite handles. Pinnacle is intact and is one sharp razor. Grooving on top and bottom of tang. 5 3/4 x 3/4 in. E.C. Simmons Hardware was in St. Louis, MO & Germany 1868-1960.



145. A VINTAGE ANGEL SET IN RARE HUBERTUS HANDLES. A "57" and an Angel holding an "S" and C.W. ENGELS SOLINGEN-FOCHE on the left tang. The notched blade is somewhat tarnished but no rust. Shaveable. Post-1909. THESE HANDLES ARE EXQUISITE AND RARE. ST HUBERTUS THE PATRON SAINT OF HUNTERS. INTRICATE. THEY ARE NOT THE SAME. PRIDE OF COLLECTION. OUTBID ON SISTER



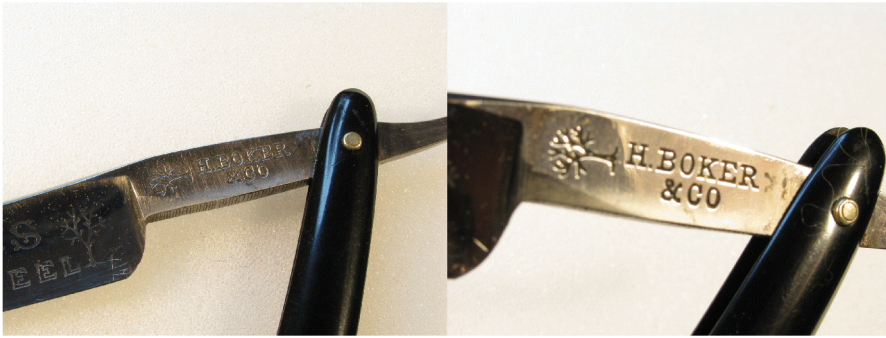


146. J.A. HENCKELS TWIN WORKS SOLINGEN-GERMANY 401 on the right, and "PLATINUM" CARBON STEEL BLADE REG U.S. PAT OFF on the left. Bottom grooves. Set in old celluloid handles that have some repairs. Worn but Sharp Shaver.



147. H. BOKER. DAMASCUS MAGNETIC STEEL with trees etched on blade. H.Boker & Co with tree stamped on left tang. Bottom grooves. LIKE NEW. BEAUTIFUL SLICK BLACK HANDLES. Box.





148. BEAUTIFUL BLADE LIKE NEW IN SHUMATE SENATOR BOX. BLADE SAYS QUALITAT SOLINGEN & GARANTIES SOLINGEN. INLAID FLOWER ON HANDLE & GOLD-RED ETCHING ON BLADE SHOWING PANCHOR AND IRONWORKER PICTURES.



149. GENCO HENRY'S X. Geneva Cutlery, NY. Box. Slick black celluloid handles. 1902-1935 No art.





150. SOINGEN Blade marked 402 with a sword and stamped scrolling on left tang, and SOINGEN inlaid on creamy celluloid handles. It comes in a box labeled ELECTRIC SOLINGEN & 402 RAZOR etc. (Electric Cutlery Co. NJ & NY; 1873-1920) It's like new.

